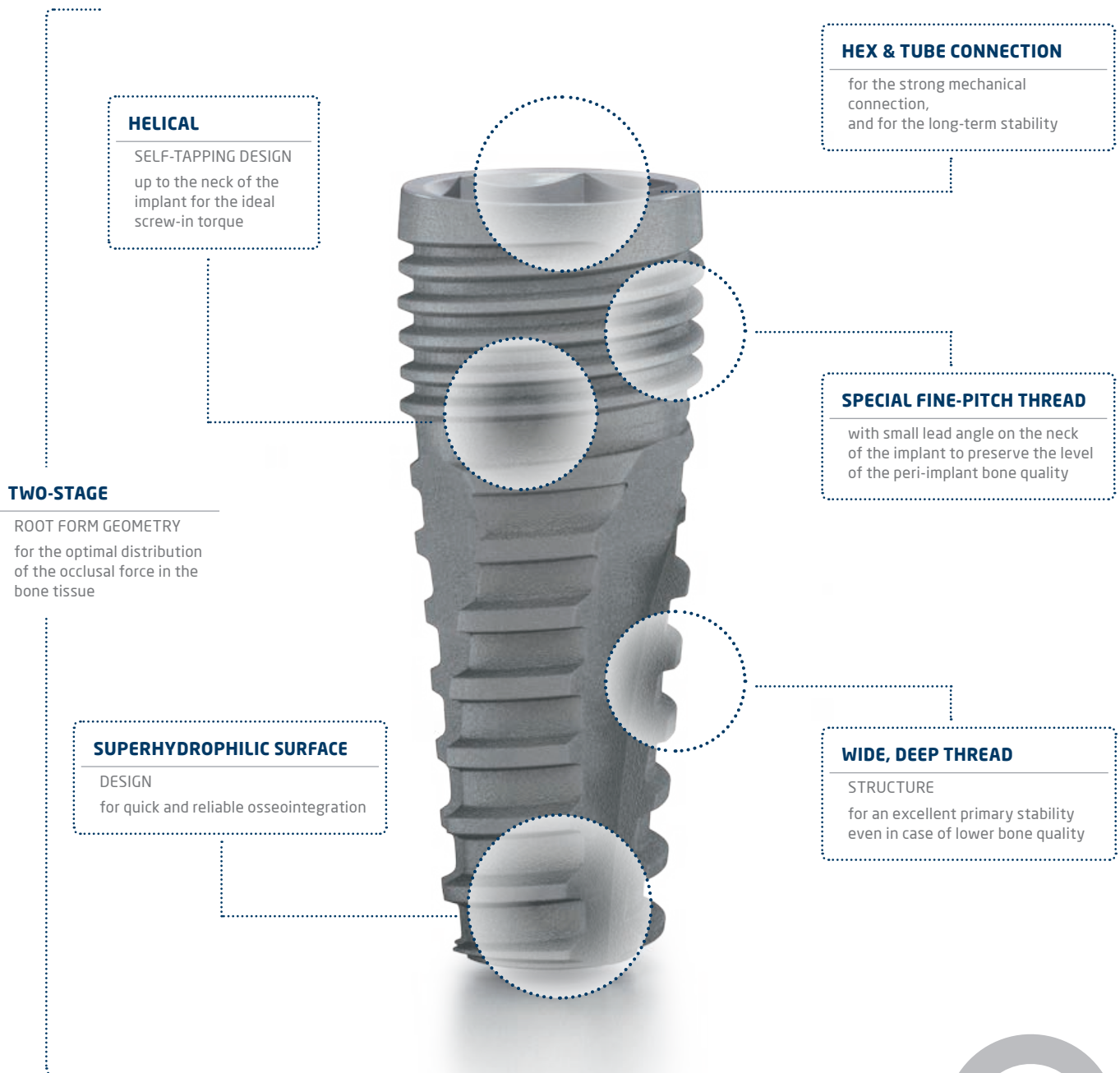


Denti® Root Form Plus

two-stage implant system





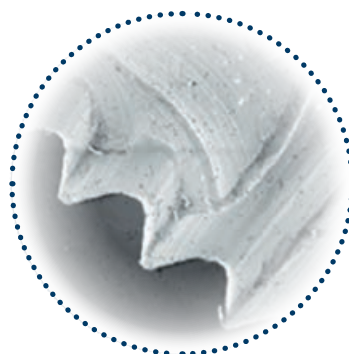
DENTI® ROOT FORM PLUS

SURFACE

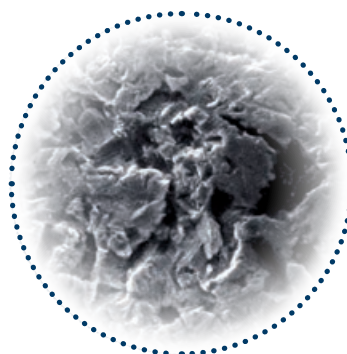
The Denti® implants' surface is the combination of a physical and mechanical surface treatments (sandblasting and chemical treatment). The surface of all implants connecting to the bone shows clear titanium-oxide (rutile) crystal structure which was first micro-roughened using the large particle "sand blasting" technique then thickened with passivation. This micro-roughened, passivated surface design with its high surface energies is the guarantee for the rapid and safe formation and permanent adherence of the bone tissue on the surface of the Denti® implants. Its highly micro-porous surface ensures a stable implant-bone connection thus creating an optimal condition for successful treatment. According to clinical control studies, the success rate of Denti® implants has been above 97% over the past 27 years.

MATERIAL

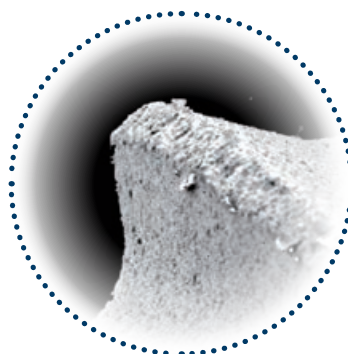
THE DENTI® IMPLANTS MADE OF UNALLOYED, PURE TITANIUM (Grade 4)



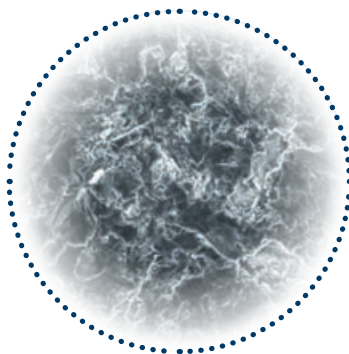
Raw processed surface



Sand-blasted surface



Passivated surface



Surface microstructure of Denti implants (MPS, SEM 500x)



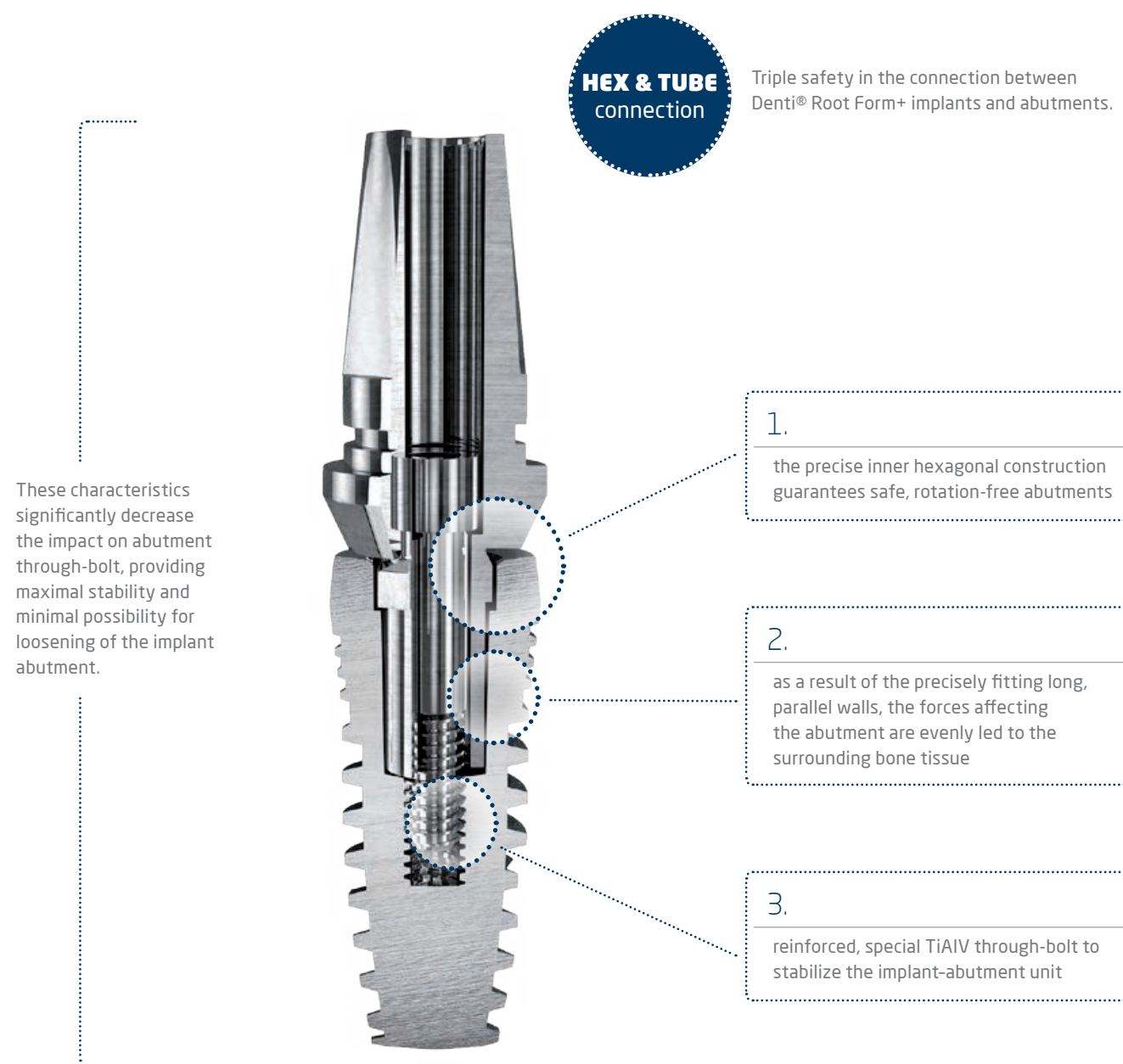
Surface microstructure of Denti implants (MPS, SEM 10.000x)



CONNECTION

IMPLANT – ABUTMENT CONNECTION

The connection between the implant body and the abutment of Denti® implants is safe according to modern mechanical requirements, and it guarantees long-term stability for the abutments and the assembly on them.





PROSTHETICS

ABUTMENT DESIGN



When the hexagonal positioning part of the head part fits into the hexagonal inside of the implant, there is a small click and the abutment becomes stable. After that, the fixing screw is screwed in and tightened with the torque ratchet through the abutment. The torque recommended for tightening of the abutment should be 25 Ncm and 30 Ncm for ball heads. Abutments are made of unalloyed titanium. The neck part of the abutments is smooth polished to ensure the development of the peri-implant permucosal seal. The low neck part encloses a threaded inner hole for fixing the screw that retains the prosthesis.



DENTI® ROOT FORM PLUS IMPLANT DESIGNS

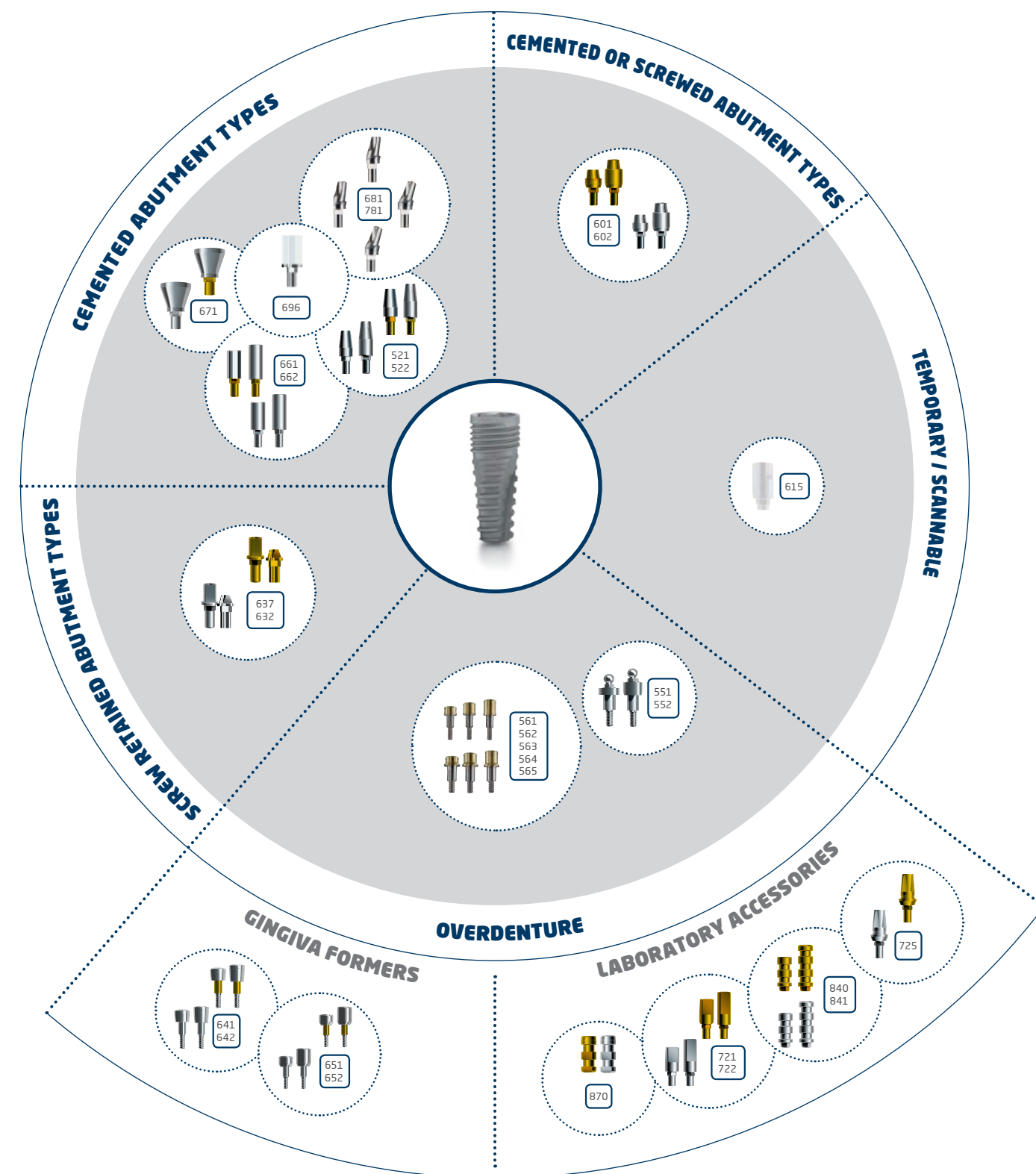
COLOR CODE AND SIGNS

The purpose of color-coding is to make usability easier in surgical procedures as well as in prosthetic and laboratory stages. The Denti® color codes are obtained by an electro-chemical reaction process without any addition of materials and thus without any change to the titanium properties. The Denti® Root Form+ system are available in 4 diameters in order to meet different needs of the patients..

The chart indicates which color corresponds to each Denti® implant diameter	
Diameter of Root Form Implants (mm)	Color code
3.3; 3,8	yellow 
4,3 - 4,8 - 5,3	natural 



PROSTHETICS





SURGICAL TRAYS

PROFESSIONAL SURGICAL SET

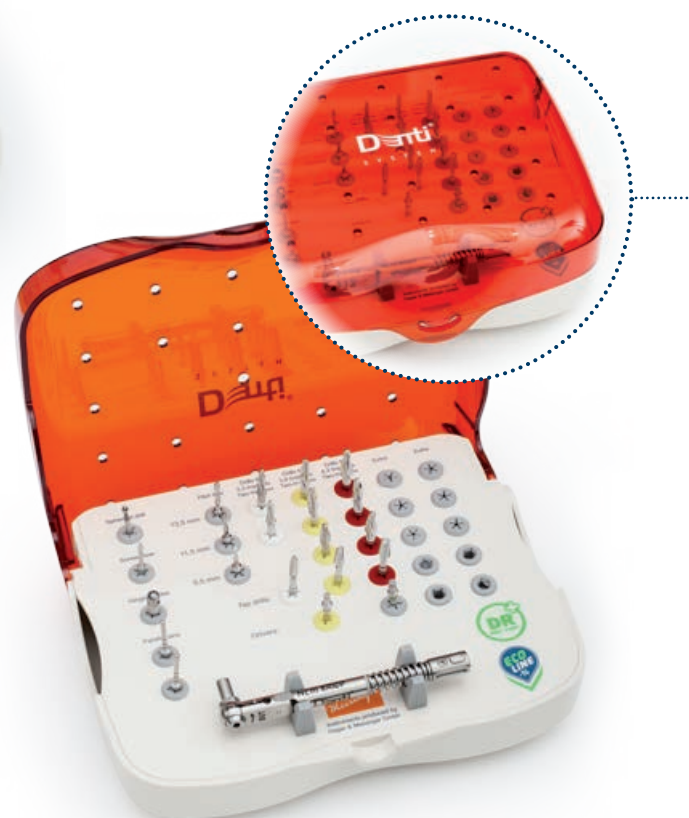
The surgical instrument trays can be used for the storage and sterilization of the instruments that belong to the implants of each system.
The surgical trays are made up of the following components: basic tray, holder, cover, colored rings, which may be exchanged when damaged.

SIZE OF THE Professional SURGICAL TRAY:
199 mm x 174 mm x 60 mm.



ECO SURGICAL SET

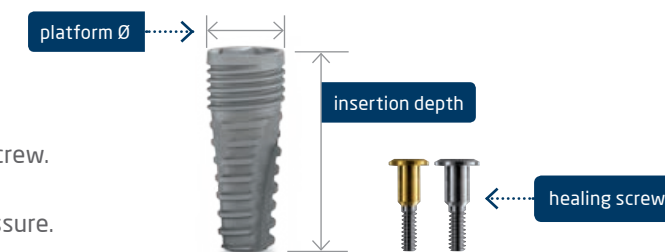
SIZE OF THE ECO SURGICAL TRAY:
176 mm x 143 mm x 63,5 mm.



IMPLANT RANGE

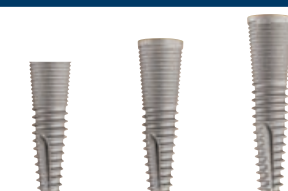
DR+ IMPLANT RANGE

The implants are delivered together with the healing screw.
Only single use of the healing screw is suggested.
When tightening the healing screw use only finger pressure.



Denti® DR+ implants Ø 3,3 mm

Reference No.	Insertion depth (mm)	Platform Ø (mm)
R 1033-115	11,5	4,0
R 1033-135	13,5	4,0
R 1033-155	15,5	4,0



Denti® DR+ implants Ø 3,8 mm

Reference No.	Insertion depth (mm)	Platform Ø (mm)
R 1538-095	9,5	4,3
R 1538-115	11,5	4,3
R 1538-135	13,5	4,3
R 1538-155	15,5	4,3



Denti® DR+ implants Ø 4,3 mm

Reference No.	Insertion depth (mm)	Platform Ø (mm)
R 1543-095	9,5	4,8
R 1543-115	11,5	4,8
R 1543-135	13,5	4,8
R 1543-155	15,5	4,8



Denti® DR+ implants Ø 4,8 mm

Reference No.	Insertion depth (mm)	Platform Ø (mm)
R 1548-095	9,5	5,3
R 1548-115	11,5	5,3
R 1548-135	13,5	5,3
R 1548-155	15,5	5,3



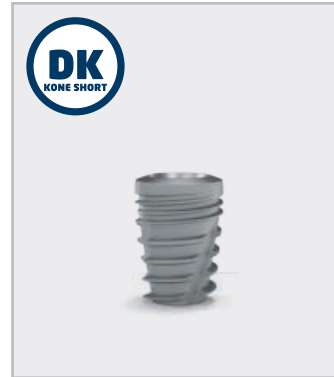
Denti® DR+ implants Ø 5,3 mm

Reference No.	Insertion depth (mm)	Platform Ø (mm)
R 1553-095	9,5	5,8
R 1553-115	11,5	5,8
R 1553-135	13,5	5,8
R 1553-155	15,5	5,8



DENTI IMPLANT SOLUTIONS

TWO-STAGE IMPLANTS



ONE-STAGE IMPLANTS



Denti
IMPLANT SOLUTIONS

WWW.DENTISYSTEM.COM