

# Denti® One Piece

## one stage implant system

### ONE-STAGE

Geometry  
for the optimal distribution  
of the occlusal force in the  
bone tissue

### BODY PART

- root form
- easy to use
- no second surgery saving time
- cost effective
- excellent primary stability
- both for immediate and late implantation

### NECK AND HEAD PART

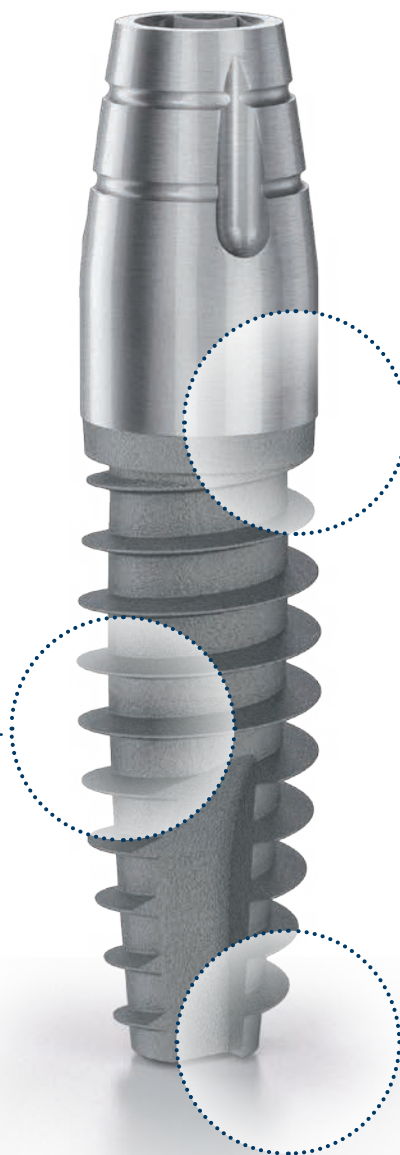
Micro-motion free

Insertion method reduces healing and waiting time for the preparation of the denture to support:

- fixed single tooth restorations
- fixed partial denture restorations
- cemented dentures as crowns and bridges
- mixed dentures
- can be used as additional implants holding temporary prosthesis during osseointegration of permanent implants inserted

### APICAL PART

- self drilling
- narrow apical part
- can be implanted by transgingival access or surgical exploration





## DENTI® ONE PIECE

### SURFACE

The Denti® implants' surface is the combination of a physical and mechanical surface treatments (sandblasting and chemical treatment). The surface of all implants connecting to the bone shows clear titanium-oxide (rutile) crystal structure which was first micro-roughened using the large particle "sand blasting" technique then thickened with passivation. This micro-roughened, passivated surface design with its high surface energies is the guarantee for the rapid and safe formation and permanent adherence of the bone tissue on the surface of the Denti® implants.

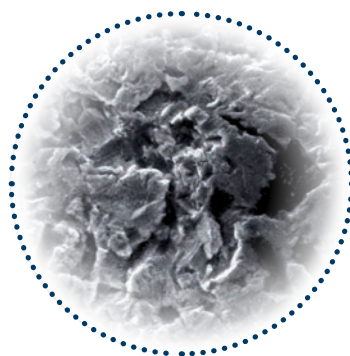
Its highly micro-porous surface ensures a stable implant-bone connection thus creating an optimal condition for successful treatment. According to clinical control studies, the success rate of Denti® implants has been above 97% over the past 27 years.

### MATERIAL

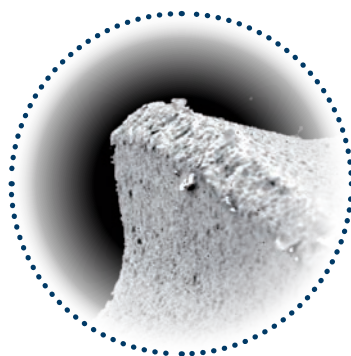
THE DENTI® IMPLANTS MADE OF UNALLOYED, PURE TITANIUM (Grade 4)



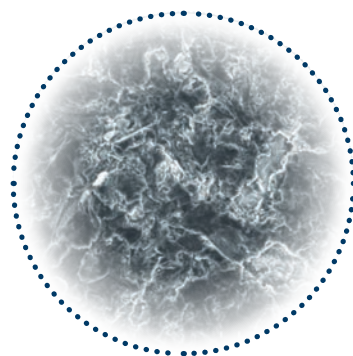
*Raw processed surface*



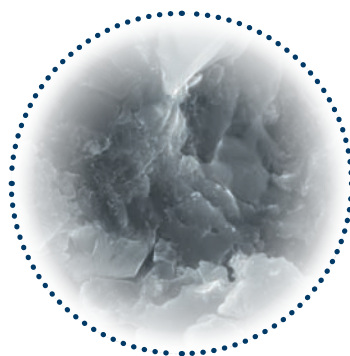
*Sand-blasted surface*



*Passivated surface*



*Surface microstructure  
of Denti implants  
(MPS, SEM 500x)*



*Surface microstructure  
of Denti implants  
(MPS, SEM 10.000x)*



## INDICATIONS

### INDICATIONS AND CONTRA-INDICATIONS

#### INDICATIONS

- to support fixed single tooth restorations
- to support fixed partial denture restorations
- can be used as additional implants holding temporary prosthesis during osseointegration of permanent implants inserted

#### CONTRA-INDICATIONS

- poor bone quality
- soft bone quality (class D4)
- less than 8 mm vertical distance between the antagonist occlusal surface and the bone of the toothless surface
- significant extent of bone deficiency

One piece implants are not recommended for using together with augmentation material





## SURGICAL TRAYS

### PROFESSIONAL SURGICAL SET

The surgical instrument trays can be used for the storage and sterilization of the instruments that belong to the implants of each system.

The surgical trays are made of the following components: basic tray, holder, cover, colored rings, which may be exchanged when damaged.

SIZE OF THE Professional SURGICAL TRAY:  
110 mm x 110 mm x 60 mm.



## INSTRUMENTS

The Denti® One Piece Surgical Kit is designed for a quick and rational insertion.

### THE DRILLS ARE:

- made of surgical stainless steel
- color coded for quick identification
- laser marked for marking depths and diameters
- autoclavable
- available in a complete kit or as individual items
- for external irrigation

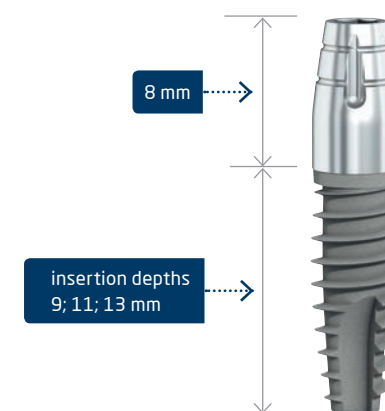
### THE TRAY:

- is clearly labelled and color coded
- makes the order of drills and instruments clear and simple



## IMPLANT RANGE

### DOP IMPLANT RANGE



#### Denti® OP implants Ø 3,8 mm

Reference No. with extended head height (8mm)	Insertion depth (mm)
OP 113809	9,0
OP 113811	11,0
OP 113813	13,0



#### Denti® OP implants Ø 4,3 mm

Reference No. with extended head height (8mm)	Insertion depth (mm)
OP 114309	9,0
OP 114311	11,0
OP 114313	13,0



#### Denti® OP implants Ø 4,8 mm

Reference No. with extended head height (8mm)	Insertion depth (mm)
OP 114809	9,0
OP 114811	11,0
OP 114813	13,0





## DENTI ONE-PIECE IMPLANTS

## ACCESORIES

## DRILLS

## DENTI ONE-PIECE TRAY

## UNIVERSAL INSTRUMENTS

OP 113809  
L: 9,0mmOP 113811  
L: 11,0mmOP 113813  
L: 13,0mm8,0 mm  
insertion depths  
9,0 mm  
11,0 mm  
13,0 mmOP 114309  
L: 9,0mmOP 114311  
L: 11,0mmOP 114313  
L: 13,0mm

OPC 33884



OP 3384387



OPC 34384



OP 3384387

OP 114809  
L: 9,0mmOP 114811  
L: 11,0mmOP 114813  
L: 13,0mm

OPC 34884



OP 334887



OP 40018



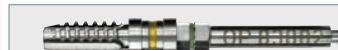
OP 83801



OP 43809



OP 43811



OP 83802



OP 40018



OP 84301



OP 44309



OP 44311



OP 84302



OP 40018



OP 84801



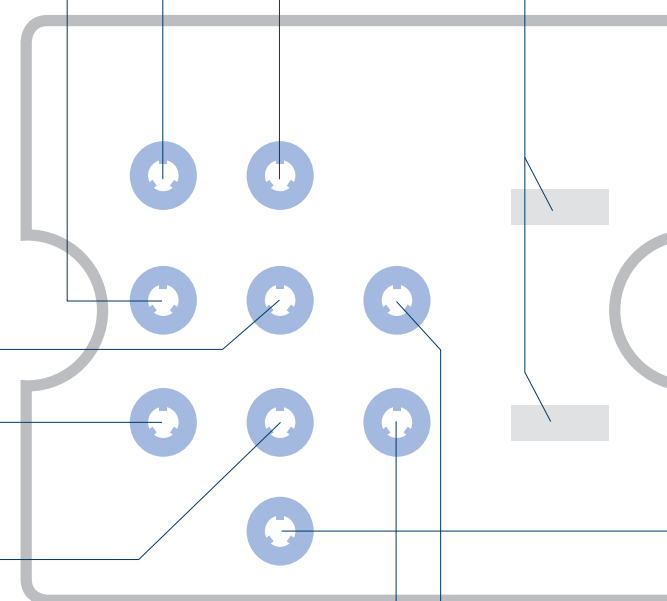
OP 44809



OP 44811



OP 84302



8000-066



8000-002



8000-143



8000-056



8000-058



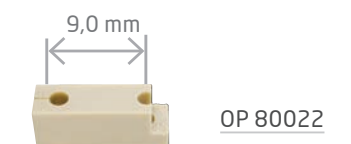
OP 80078



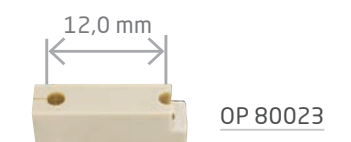
OP 80020



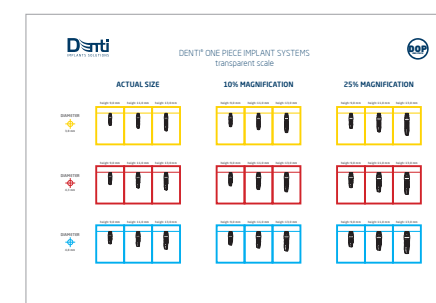
OP 80021



OP 80022



OP 80023

TRANSPARENT SCALE  
DR 8000-751

## DENTI ONE-PIECE IMPLANTS

## ACCESORIES

## DRILLS

## DENTI ONE-PIECE TRAY

## UNIVERSAL INSTRUMENTS

# DENTI IMPLANT SOLUTIONS

## TWO-STAGE IMPLANTS



## ONE-STAGE IMPLANTS



**Denti**  
IMPLANT SOLUTIONS

[WWW.DENTISYSTEM.COM](http://WWW.DENTISYSTEM.COM)