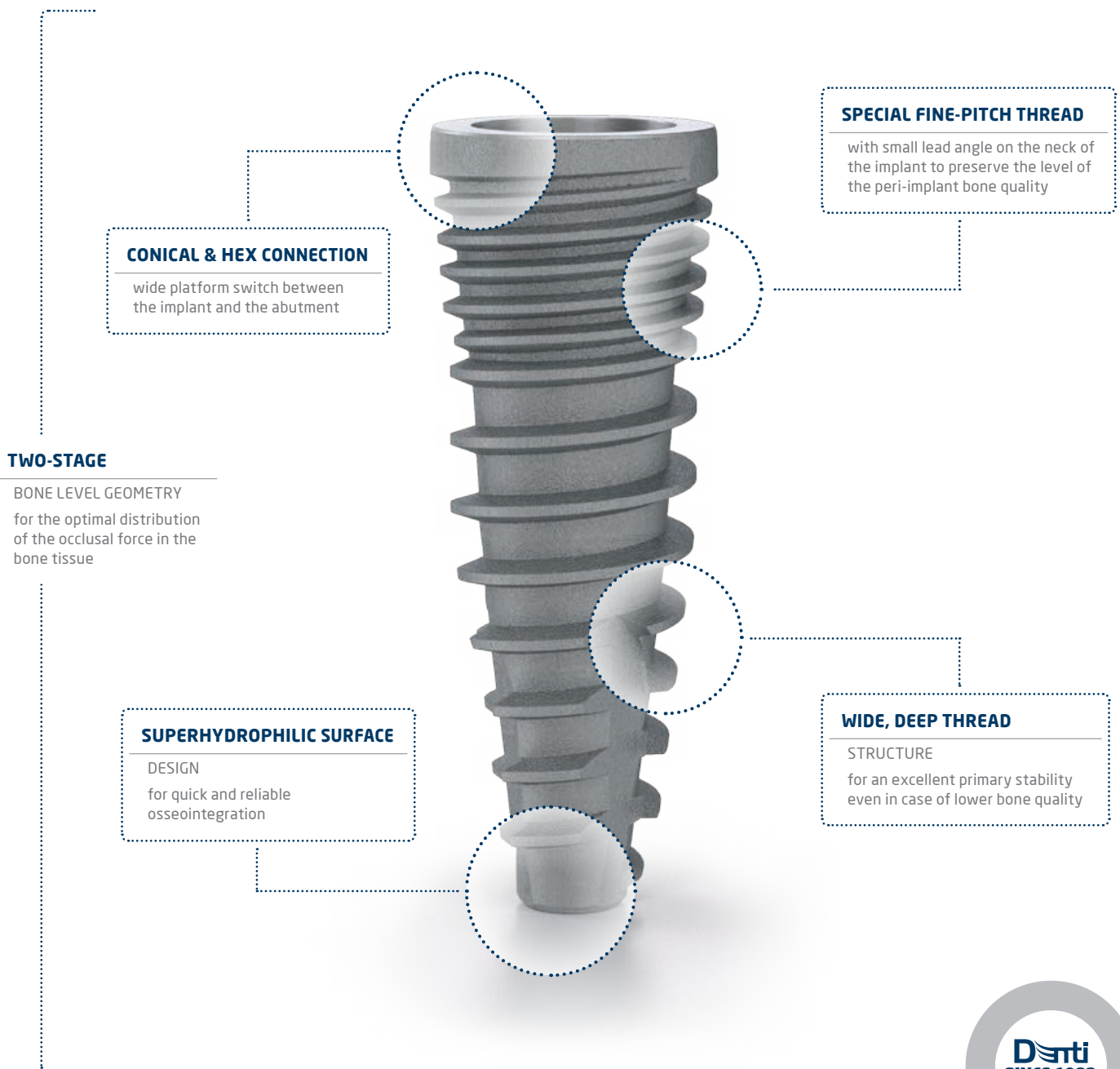


Denti® Bone level

two-stage implant system





DENTI® BONE LEVEL

SURFACE

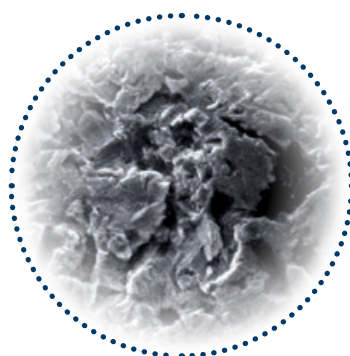
The Denti® implants' surface is the combination of a physical and mechanical surface treatments (sandblasting and chemical treatment). The surface of all implants connecting to the bone shows clear titanium-oxide (rutile) crystal structure which was first micro-roughened using the large particle "sand blasting" technique then thickened with passivation. This micro-roughened, passivated surface design with its high surface energies is the guarantee for the rapid and safe formation and permanent adherence of the bone tissue on the surface of the Denti® implants. Its highly micro-porous surface ensures a stable implant-bone connection thus creating an optimal condition for successful treatment. According to clinical control studies, the success rate of Denti® implants has been above 97% over the past 27 years.

MATERIAL

THE DENTI® IMPLANTS MADE OF UNALLOYED, PURE TITANIUM (Grade 4)



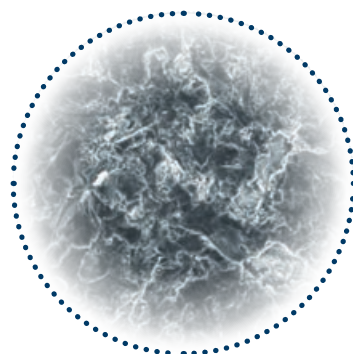
Raw processed surface



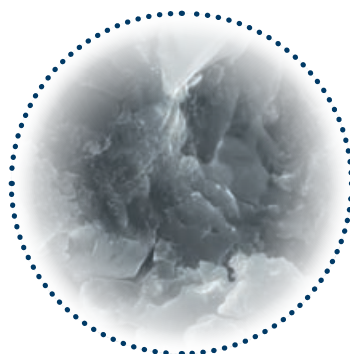
Sand-blasted surface



Passivated surface



Surface microstructure of Denti implants (MPS, SEM 500x)



Surface microstructure of Denti implants (MPS, SEM 10.000x)

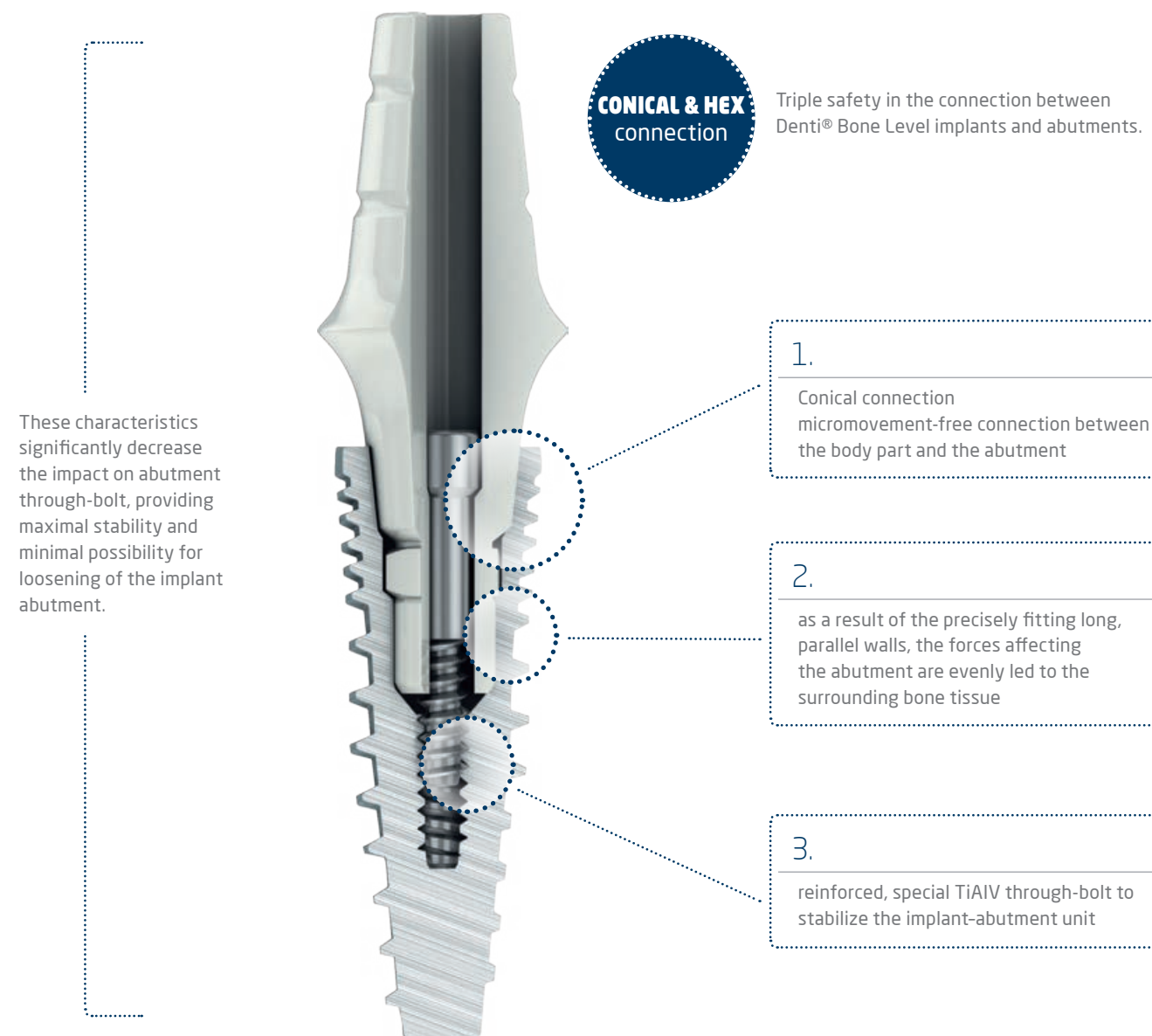


CONNECTION

CONNECTION

BACTERIA-FREE CLOSURE - MICROMOVEMENT-FREE IMPLANT-ABUTMENT CONNECTION

The self-locking cone surface is formed in the inlet of the neck part of the Denti® Bone Level implant, and there is a hexagonal recess below it. This hexagonal design serves for the screwing-in of the body part of the implant and the positioning of the abutment. From here a cylindrical bore starts in the apical direction, which receives the concentric skirt of the abutment. This tube-in-tube body part-abutment design allows for the precise insertion of the abutment, and aids the damage-free elimination of the masticatory forces acting on the abutment. Below this, apically, there is the nest of the screw securing the abutment.





PROSTHETICS



STANDARD

connection means that the connection between implant and the abutment will be established on the platform of the implant instead of conical switching.



PLATFORM SWITCH



connection means that the connection between implant and the abutment will be established on a 7° tapered connection that creates the Tissue Care Concept.

DENTI® BONE LEVEL IMPLANT DESIGNS

COLOR CODE AND SIGNS

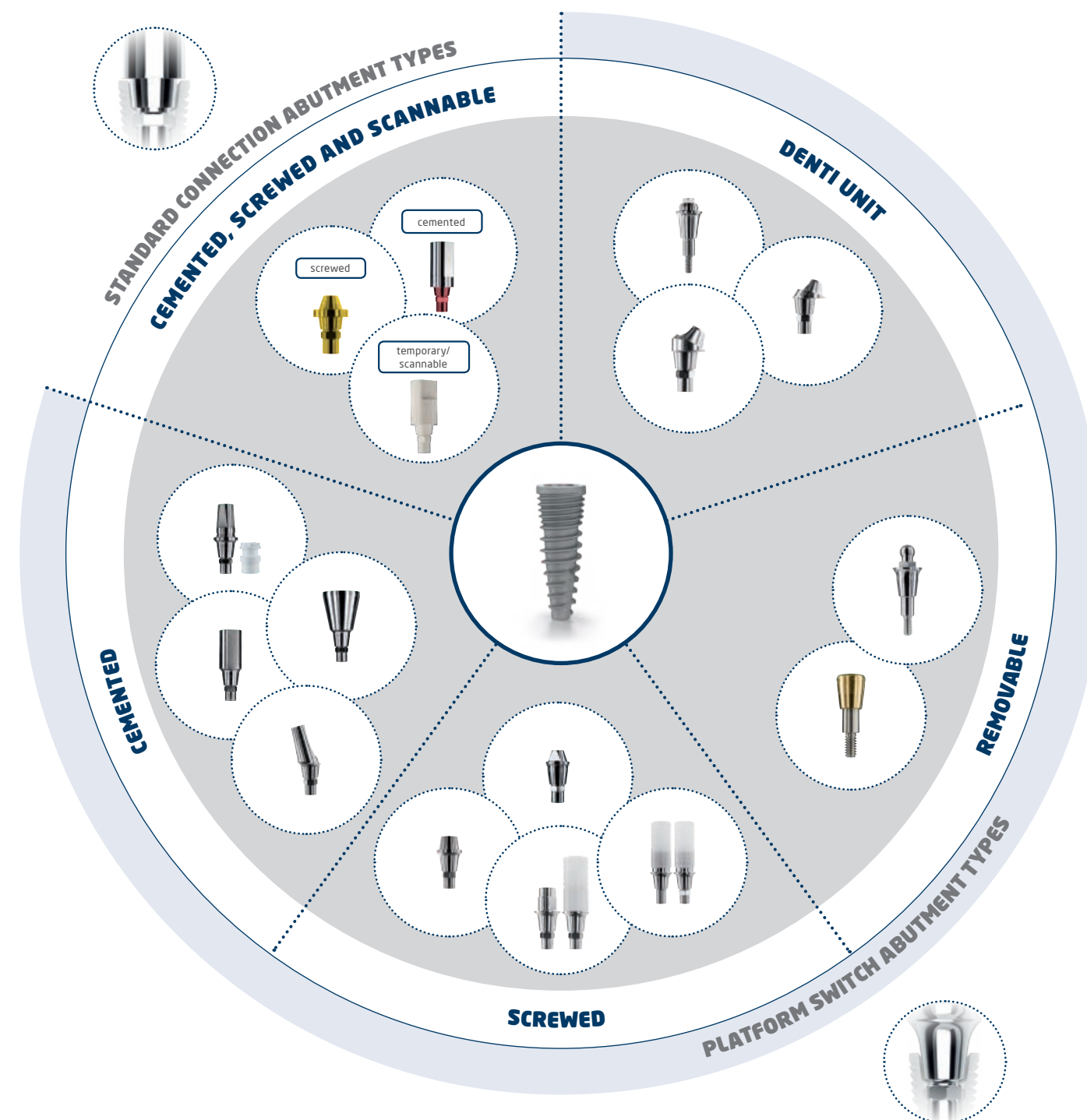
The purpose of color-coding is to make usability easier in surgical procedures as well as in prosthetic and laboratory stages. The Denti® color codes are obtained by an electro-chemical reaction process without any addition of materials and thus without any change to the titanium properties. The Denti® Bone Level system are available in 4 diameters in order to meet different needs of the patients.

The chart indicates which color corresponds to each Denti® implant diameter

Diameter of Bone Level Implants (mm)	Color code
3,8	yellow 
4,3 - 4,8 - 5,3	natural 



PROSTHETICS





SURGICAL TRAYS

PROFESSIONAL SURGICAL SET

The surgical instrument trays can be used for the storage and sterilization of the instruments that belong to the implants of each system.
The surgical trays are made up of the following components: basic tray, holder, cover, colored rings, which may be exchanged when damaged.

SIZE OF THE Professional SURGICAL TRAY:
199 mm x 174 mm x 60 mm.



ECO SURGICAL SET

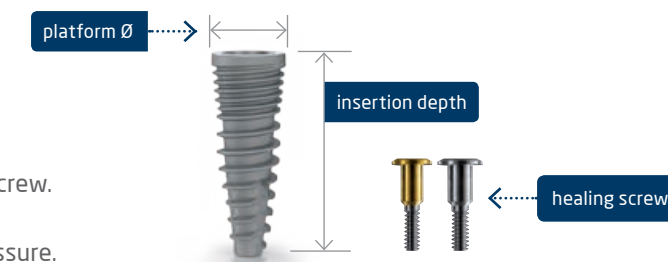
SIZE OF THE ECO SURGICAL TRAY:
176 mm x 143 mm x 63,5 mm.



IMPLANT RANGE

DBL IMPLANT RANGE

The implants are delivered together with the healing screw.
Only single use of the healing screw is suggested.
When tightening the healing screw use only finger pressure.



Denti® DBL implants Ø 3,8 mm

Reference No.	Insertion depth (mm)	Platform Ø (mm)
BL 1038-095	9,5	4,2
BL 1038-115	11,5	4,2
BL 1038-135	13,5	4,2
BL 1038-155	15,5	4,2



Denti® DBL implants Ø 4,3 mm

Reference No.	Insertion depth (mm)	Platform Ø (mm)
BL 1043-095	9,5	4,8
BL 1043-115	11,5	4,8
BL 1043-135	13,5	4,8
BL 1043-155	15,5	4,8



Denti® DBL implants Ø 4,8 mm

Reference No.	Insertion depth (mm)	Platform Ø (mm)
BL 1048-095	9,5	5,2
BL 1048-115	11,5	5,2
BL 1048-135	13,5	5,2
BL 1048-155	15,5	5,2



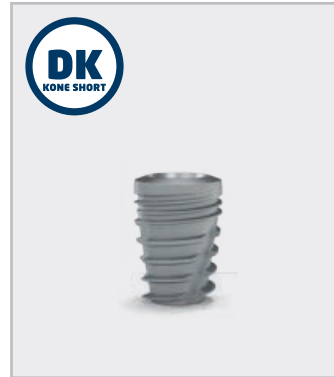
Denti® DBL implants Ø 5,3 mm

Reference No.	Insertion depth (mm)	Platform Ø (mm)
BL 1053-095	9,5	5,6
BL 1053-115	11,5	5,6
BL 1053-135	13,5	5,6
BL 1053-155	15,5	5,6



DENTI IMPLANT SOLUTIONS

TWO-STAGE IMPLANTS



ONE-STAGE IMPLANTS



Denti
IMPLANT SOLUTIONS