

# Denti<sup>®</sup> Needle

## one stage implant system

### ONE-STAGE

Geometry  
for the optimal distribution  
of the occlusal force in the  
bone tissue

#### BODY PART

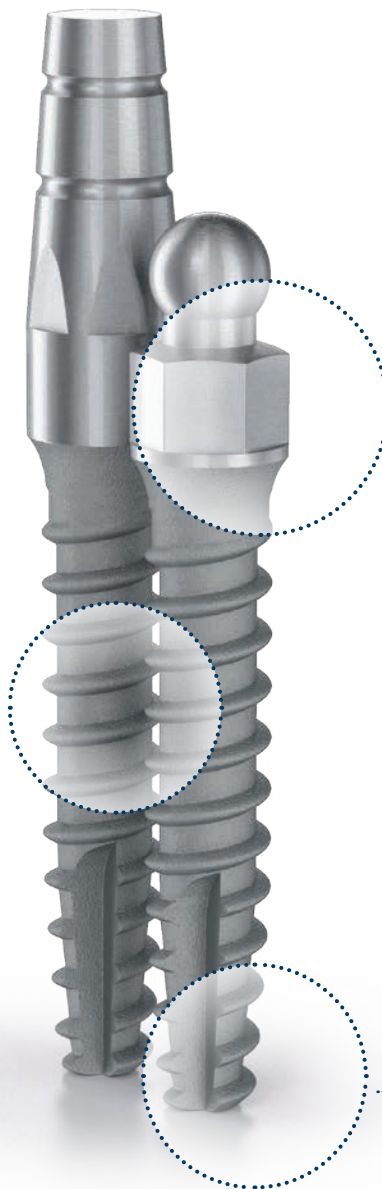
- deep threads
- needle form
- easy to use
- rapid and trauma-free surgical intervention
- short chair time
- cost-effective choice
- for an excellent primary stability even in case of lower bone quality (bone types III & IV)

#### NECK AND HEAD PART

- conic and ball head design
- for transgingival intervention, without exploration
- for denture retention both in the maxilla and mandible
- for removable prosthesis
- for single and multiple dentures both for bridges and crowns
- for provisional stabilization additionally to traditional implants in the recovery period

#### APICAL PART

- self tapping
- self drilling





## DENTI® NEEDLE

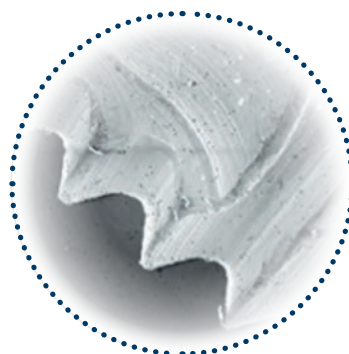
### SURFACE

The Denti® implants' surface is the combination of a physical and mechanical surface treatments (sandblasting and chemical treatment). The surface of all implants connecting to the bone shows clear titanium-oxide (rutile) crystal structure which was first micro-roughened using the large particle "sand blasting" technique then thickened with passivation. This micro-roughened, passivated surface design with its high surface energies is the guarantee for the rapid and safe formation and permanent adherence of the bone tissue on the surface of the Denti® implants.

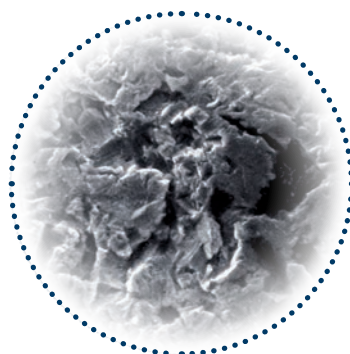
Its highly micro-porous surface ensures a stable implant-bone connection thus creating an optimal condition for successful treatment. According to clinical control studies, the success rate of Denti® implants has been above 97% over the past 27 years.

### MATERIAL

THE DENTI® IMPLANTS MADE OF UNALLOYED, PURE TITANIUM (Grade 4)



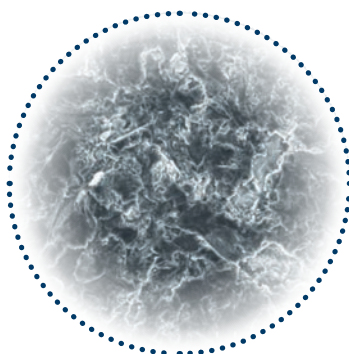
Raw processed surface



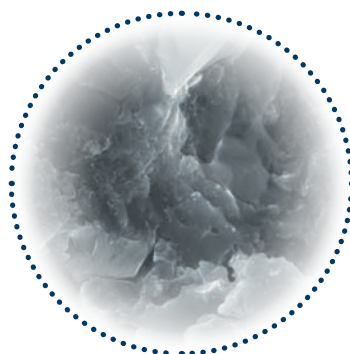
Sand-blasted surface



Passivated surface



Surface microstructure  
of Denti implants  
(MPS, SEM 500x)



Surface microstructure  
of Denti implants  
(MPS, SEM 10.000x)



## INDICATIONS

### INDICATIONS AND CONTRA-INDICATIONS

#### INDICATIONS

- to support fixed single tooth restorations
- to support fixed partial denture restorations
- can be used as additional implants holding temporary prosthesis during osseointegration of permanent implants inserted

#### CONTRA-INDICATIONS

- poor bone quality
- soft bone quality (class D4)
- less than 8 mm vertical distance between the antagonist occlusal surface and the bone of the toothless surface
- significant extent of bone deficiency

One piece implants are not recommended for using together with augmentation material



### USAGE

- for transgingival intervention, without exploration
- for denture retention both in the maxilla and mandible
- for removable prosthesis
- for single and multiple dentures both for bridges and crowns
- for provisional stabilization additionally to permanent implants in the recovery period

### THE SIMPLE CHOICE

- conic and ball head design
- rapid and trauma-free surgical intervention
- short chair time
- cost-effective choice both for the patients and the dentists

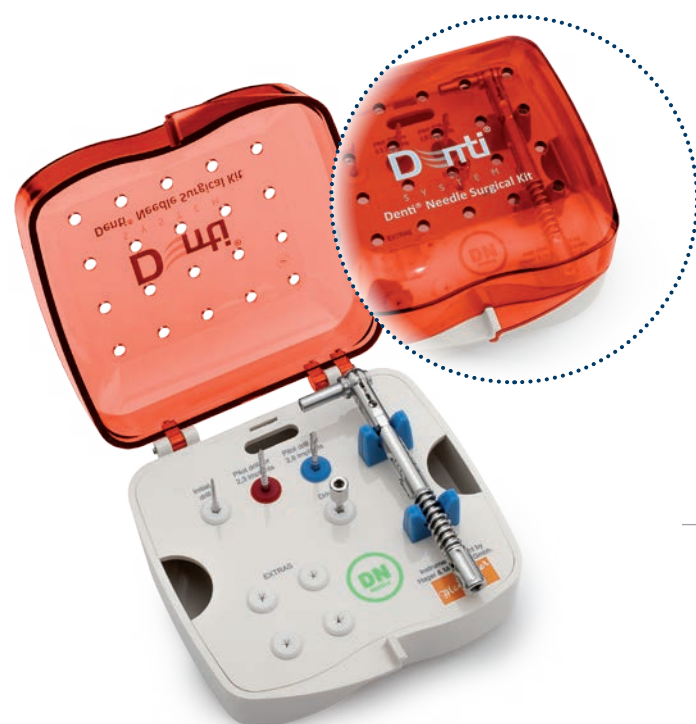


## SURGICAL TRAYS

### PROFESSIONAL SURGICAL SET

The surgical instrument trays can be used for the storage and sterilization of the instruments that belong to the implants of each system.  
The surgical trays are made up of the following components: basic tray, holder, cover, colored rings, which may be exchanged when damaged.

SIZE OF THE Professional SURGICAL TRAY:  
110 mm x 110 mm x 60 mm.



## INSTRUMENTS

The Denti® Needle Surgical Kit is designed for a quick and rational insertion.

### THE DRILLS ARE:

- made from surgical stainless steel
- color coded for quick identification
- laser marked for marking depths and diameters
- autoclavable
- available in a complete kit or as individual items
- for external irrigation

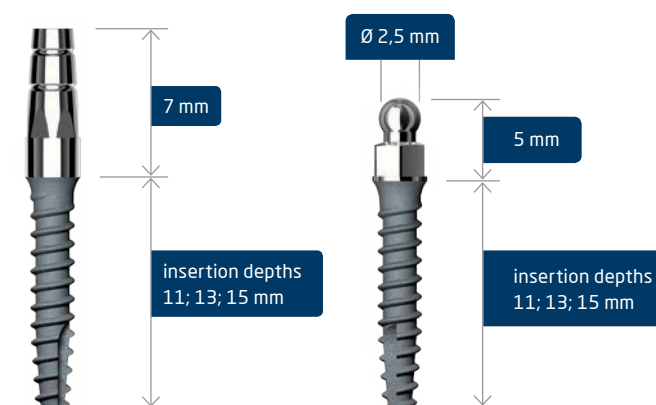
### THE TRAY:

- is clearly labelled and color coded
- makes the organisation of all drills and instruments clear and simple



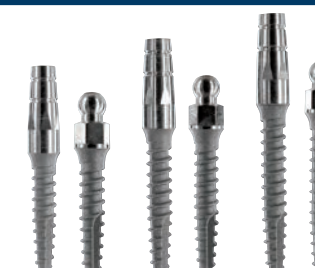
## IMPLANT RANGE

### DN IMPLANT RANGE



#### DN implants Ø 2,3 mm

Reference No. Denti N with conical head	Reference No. Denti N with ball head	Insertion depth (mm)
N 12311	NB 12311	11,0
N 12313	NB 12313	13,0
N 12315	NB 12315	15,0



#### DN implants Ø 2,8 mm

Reference No. Denti N with conical head	Reference No. Denti N with ball head	Insertion depth (mm)
N 12811	NB 12811	11,0
N 12813	NB 12813	13,0
N 12815	NB 12815	15,0



DENTI NEEDLE IMPLANTS

ACCESORIES

INSTRUMENTS

DENTI NEEDLE TRAY



N 12311  
L: 11,0mm



N 12313  
L: 13,0mm



N 12315  
L: 15,0mm



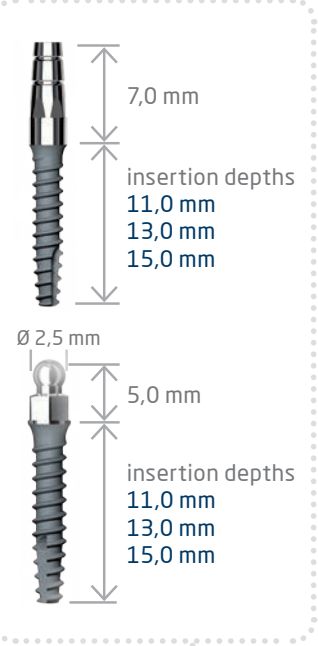
NB 12311  
L: 11,0mm



NB 12313  
L: 13,0mm



NB 12315  
L: 15,0mm



N 3232884



N 3232887



NB 3232887



N 12811  
L: 11,0mm



N 12813  
L: 13,0mm



N 12815  
L: 15,0mm



NB 12811  
L: 11,0mm



NB 12813  
L: 13,0mm



NB 12815  
L: 15,0mm



N 80028



40018



8000-066



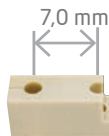
N 8000-079



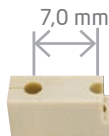
OP 80020



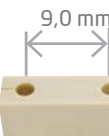
N 40028



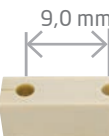
OP 80021  
for Ø 2,3 mm implants



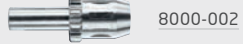
N 80287  
for Ø 2,8 mm implants



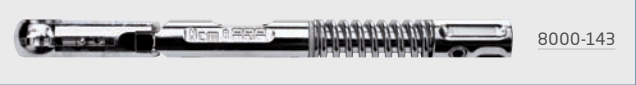
OP 80022  
for Ø 2,3 mm implants



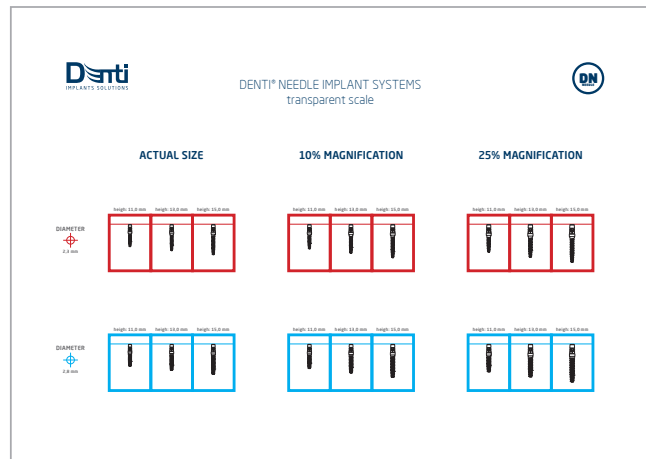
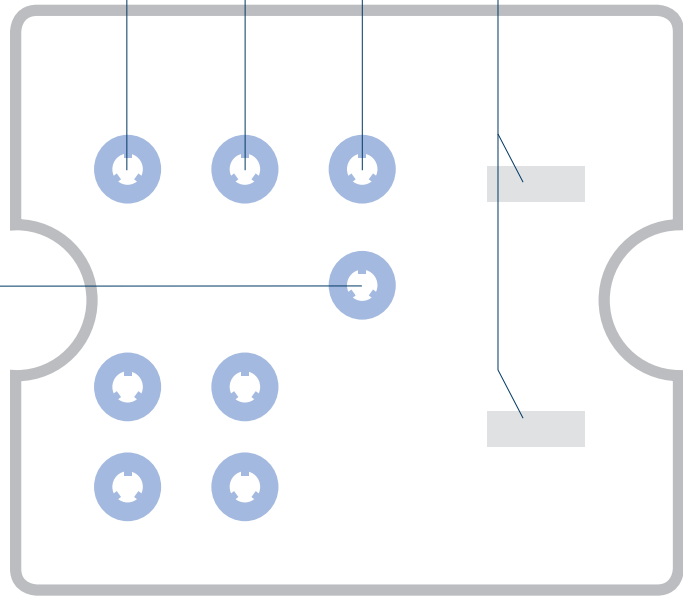
N 40289  
for Ø 2,8 mm implants



8000-002



8000-143



N 30075

DENTI NEEDLE IMPLANTS

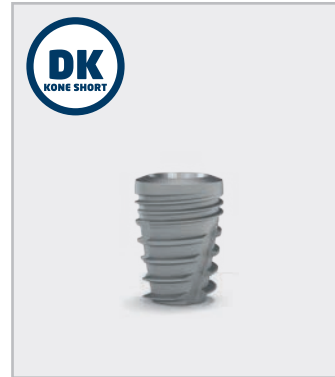
ACCESORIES

INSTRUMENTS

DENTI NEEDLE TRAY

# DENTI IMPLANT SOLUTIONS

## TWO-STAGE IMPLANTS



## ONE-STAGE IMPLANTS



**Denti**  
IMPLANT SOLUTIONS

[WWW.DENTISYSTEM.COM](http://WWW.DENTISYSTEM.COM)